

LSC Key

- Proposed route of underground fiber optic cable
- Proposed Hand Hole

Total Distance: 1.07 mi
 Depth of Cover: 42"
 Line Diameter: 1.25"
 Line Material: Orange HDPE
 Method of Installation: Directional Drilling
 Hand Hole Dimensions : 24"x36"x30"

Distances are from proposed line route to sidewalk/curb

Distances from proposed utilities not shown due to available data

All distances are approximate


3 Water Main Line Crossings
 4 Storm Gravity Main line Crossings
 1 Steel Gas Main Line Crossing
 1 City Sanitary Main Line Crossing

GIS Legend
 City of Duluth

- Water Main
- Fire Hydrant
- Storm Gravity Main
- <all other values>
- Ground
- Storm Inlet/Outlet
- Parcel W/Address

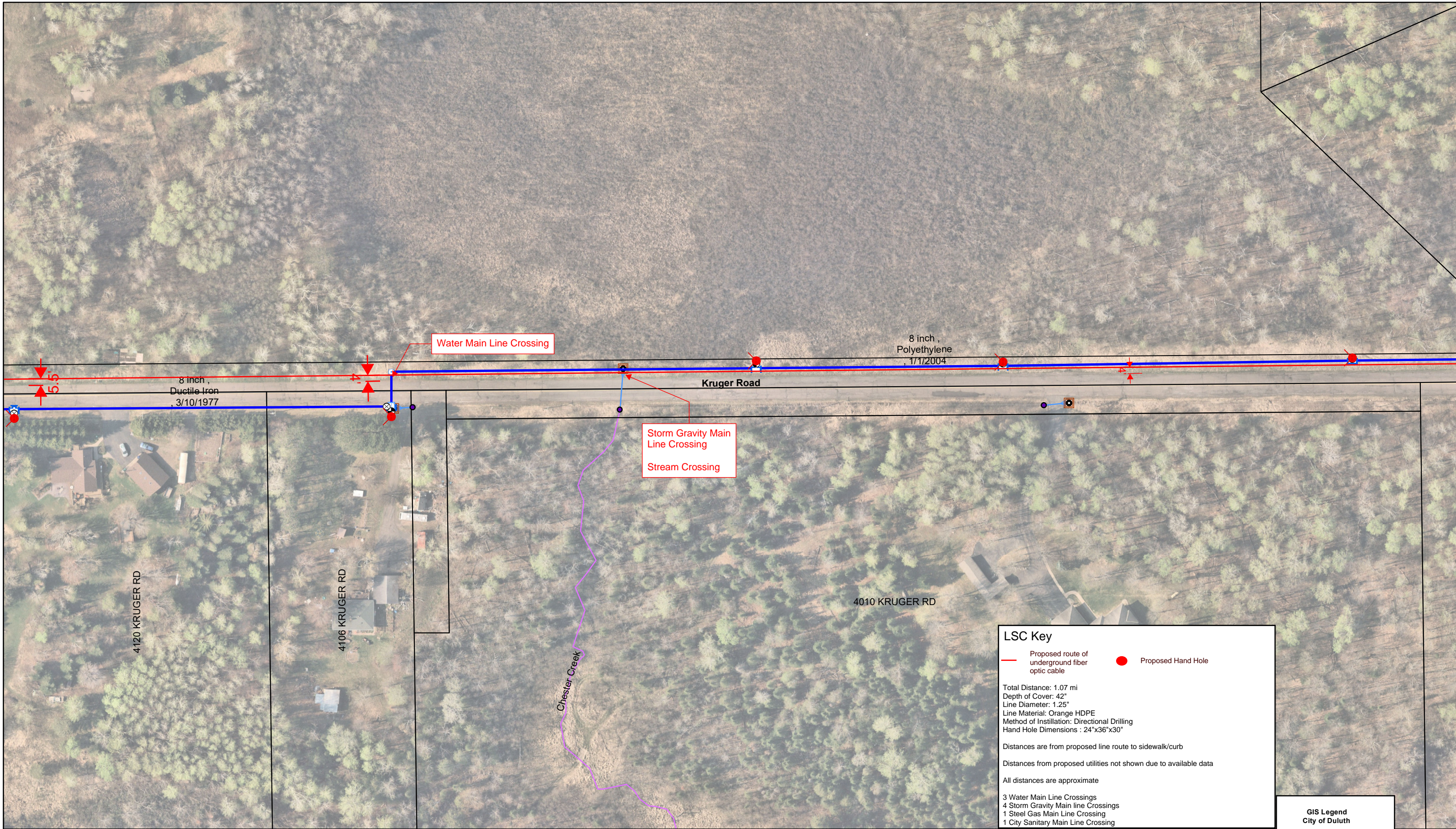
The City of Duluth has tried to ensure that the information contained in this map or electronic document is accurate. The City of Duluth makes no warranty or guarantee concerning the accuracy or reliability. This drawing/data is neither a legally recorded map nor a survey and is not intended to be used as one. The drawing/data is a compilation of records, information and data located in various City, County and State offices and other sources affecting the area shown and is to be used for reference purposes only. The City of Duluth shall not be liable for errors contained within this data provided or for any damages in connection with the use of this information contained within.

The City of Duluth requires that this map/data not be redistributed to any party in whole or in part, including any derivative works of products generated by combining the data with other data, unless authorized by the City of Duluth GIS office.


 1 inch = 100 feet

City of Duluth Public Works & Utilities

Date: 4/19/2024
 The aerial photo in this map is APPROXIMATELY lined up with the parcel and Right of Way lines



LSC Key

— Proposed route of underground fiber optic cable ● Proposed Hand Hole

Total Distance: 1.07 mi
 Depth of Cover: 42"
 Line Diameter: 1.25"
 Line Material: Orange HDPE
 Method of Installation: Directional Drilling
 Hand Hole Dimensions : 24"x36"x30"

Distances are from proposed line route to sidewalk/curb
 Distances from proposed utilities not shown due to available data
 All distances are approximate

3 Water Main Line Crossings
 4 Storm Gravity Main line Crossings
 1 Steel Gas Main Line Crossing
 1 City Sanitary Main Line Crossing

GIS Legend
 City of Duluth

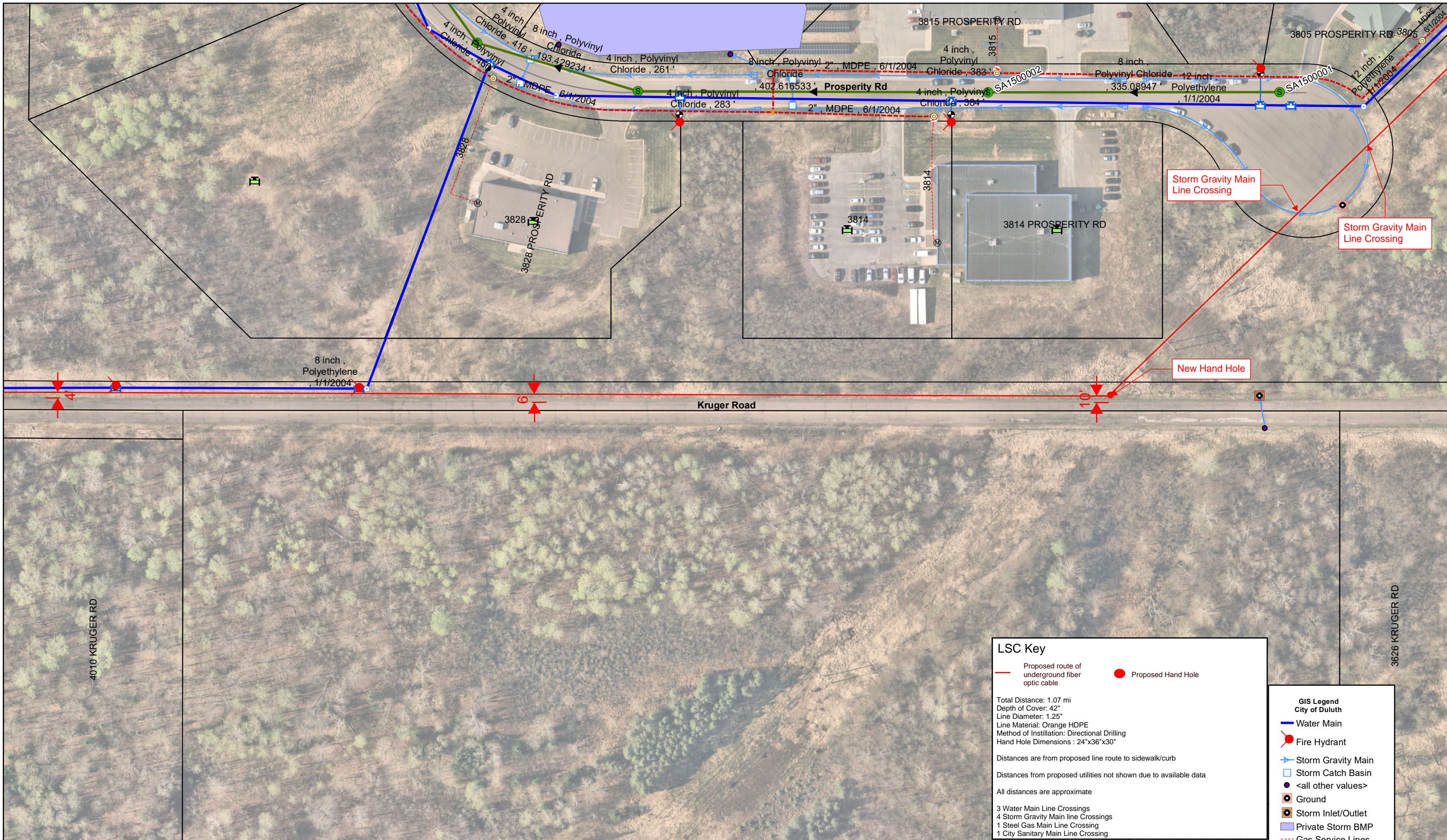
- Water Main
- Fire Hydrant
- Storm Gravity Main
- <all other values>
- ☐ Storm Inlet/Outlet
- ☐ Parcel W/Address

The City of Duluth has tried to ensure that the information contained in this map or electronic document is accurate. The City of Duluth makes no warranty or guarantee concerning the accuracy or reliability. This drawing/data is neither a legally recorded map nor a survey and is not intended to be used as one. The drawing/data is a compilation of records, information and data located in various City, County and State offices and other sources affecting the area shown and is to be used for reference purposes only. The City of Duluth shall not be liable for errors contained within this data provided or for any damages in connection with the use of this information contained within.
 The City of Duluth requires that this map/data not be redistributed to any party in whole or in part, including any derivative works of products generated by combining the data with other data, unless authorized by the City of Duluth GIS office.

1 inch = 100 feet

**City of Duluth
 Public Works & Utilities**

Date: 4/19/2024
 The aerial photo in this map is APPROXIMATELY lined up with the parcel and Right of Way lines



LSC Key

— Proposed route of underground fiber optic cable ● Proposed Hand Hole

Total Distance: 1.07 mi
 Depth of Cover: 42"
 Line Diameter: 1.25"
 Line Material: Orange HDPE
 Method of Installation: Directional Drilling
 Hand Hole Dimensions : 24"x36"x30"

Distances are from proposed line route to sidewalk/curb

Distances from proposed utilities not shown due to available data

All distances are approximate

3 Water Main Line Crossings
 4 Storm Gravity Main line Crossings
 1 Steel Gas Main Line Crossing
 1 City Sanitary Main Line Crossing

GIS Legend
 City of Duluth

- Water Main
- Storm Gravity Main
- Storm Catch Basin
- <all other values>
- Ground
- Storm Inlet/Outlet
- Private Storm BMP
- Gas Service Lines
- PE Gas Main
- Parcel W/Address
- Wye Left Side
- Sanitary Manhole
- CITY Sanitary Main

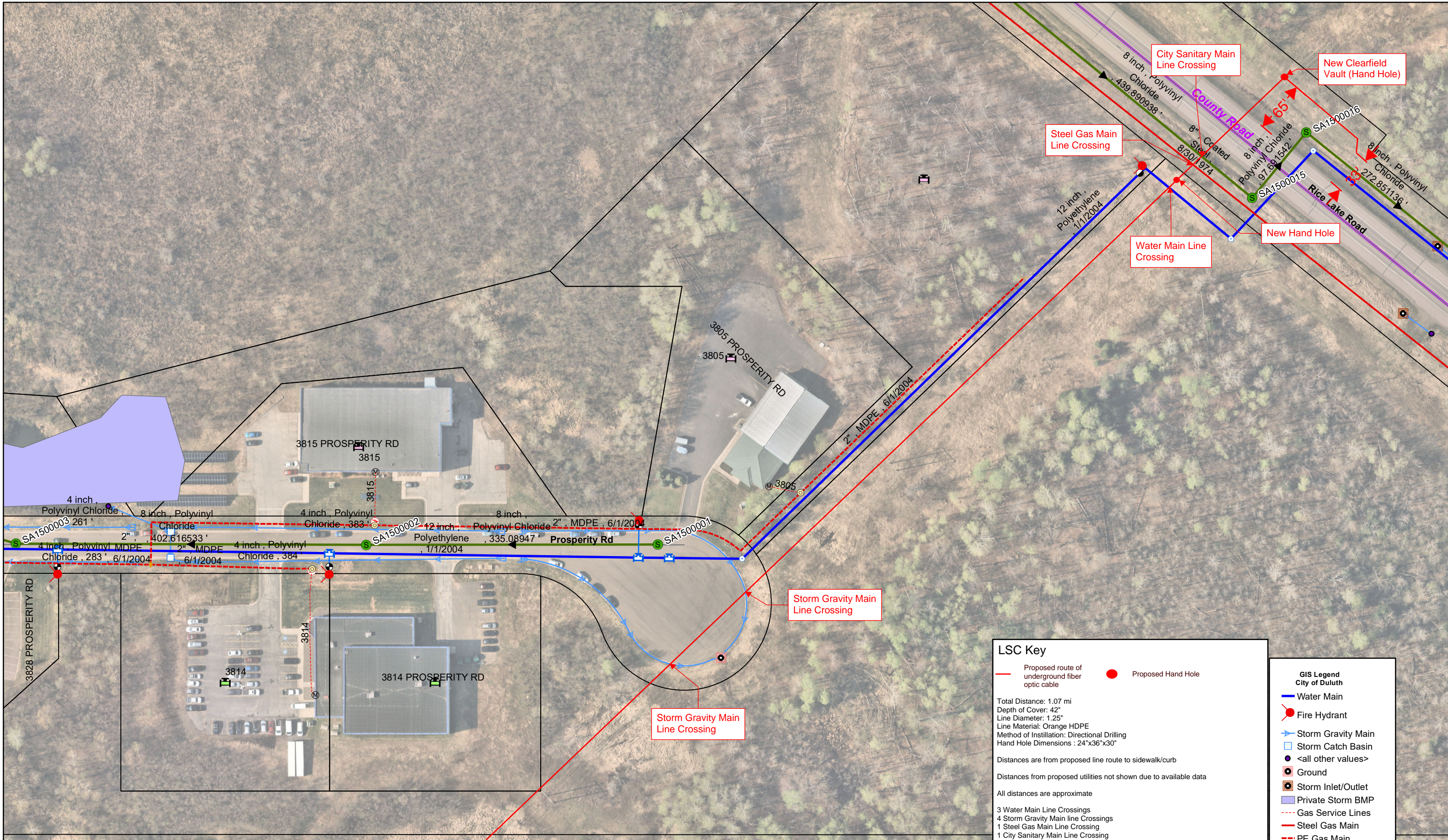
The City of Duluth has tried to ensure that the information contained in this map or electronic document is accurate. The City of Duluth makes no warranty or guarantee concerning the accuracy or reliability. This drawing/data is neither a legally recorded map nor a survey and is not intended to be used as one. The drawing/data is a compilation of records, information and data located in various City, County and State offices and other sources affecting the area shown and is to be used for reference purposes only. The City of Duluth shall not be liable for errors contained within this data provided or for any damages in connection with the use of this information contained within.

The City of Duluth requires that this map/data not be redistributed to any party in whole or in part, including any derivative works of products generated by combining the data with other data, unless authorized by the City of Duluth GIS office.

1 inch = 100 feet

City of Duluth Public Works & Utilities

Date: 4/19/2024
 The aerial photo in this map is APPROXIMATELY lined up with the parcel and Right of Way lines



LSC Key

- Proposed route of underground fiber optic cable
- Proposed Hand Hole

Total Distance: 1.07 mi
 Depth of Cover: 42"
 Line Diameter: 1.25"
 Line Material: Orange HDPE
 Method of Installation: Directional Drilling
 Hand Hole Dimensions : 24"x36"x30"

Distances are from proposed line route to sidewalk/curb

Distances from proposed utilities not shown due to available data

All distances are approximate

- 3 Water Main Line Crossings
- 4 Storm Gravity Main line Crossings
- 1 Steel Gas Main Line Crossing
- 1 City Sanitary Main Line Crossing

GIS Legend
City of Duluth

- Water Main
- Fire Hydrant
- Storm Gravity Main
- Storm Catch Basin
- <all other values>
- Ground
- Storm Inlet/Outlet
- Private Storm BMP
- Gas Service Lines
- Steel Gas Main
- PE Gas Main
- Parcel W/Address
- Wye Left Side
- Wye Right Side
- Sanitary Manhole
- CITY Sanitary Main

The City of Duluth has tried to ensure that the information contained in this map or electronic document is accurate. The City of Duluth makes no warranty or guarantee concerning the accuracy or reliability. This drawing/data is neither a legally recorded map nor a survey and is not intended to be used as one. The drawing/data is a compilation of records, information and data located in various City, County and State offices and other sources affecting the area shown and is to be used for reference purposes only. The City of Duluth shall not be liable for errors contained within this data provided or for any damages in connection with the use of this information contained within.

The City of Duluth requires that this map/data not be redistributed to any party in whole or in part, including any derivative works of products generated by combining the data with other data, unless authorized by the City of Duluth GIS office.

1 inch = 100 feet

**City of Duluth
Public Works & Utilities**

Date: 4/19/2024
 The aerial photo in this map is APPROXIMATELY lined up with the parcel and Right of Way lines